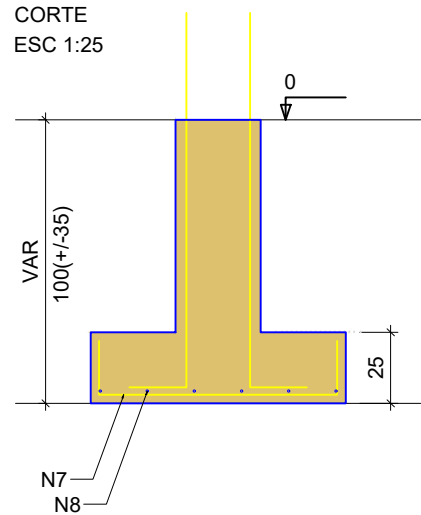
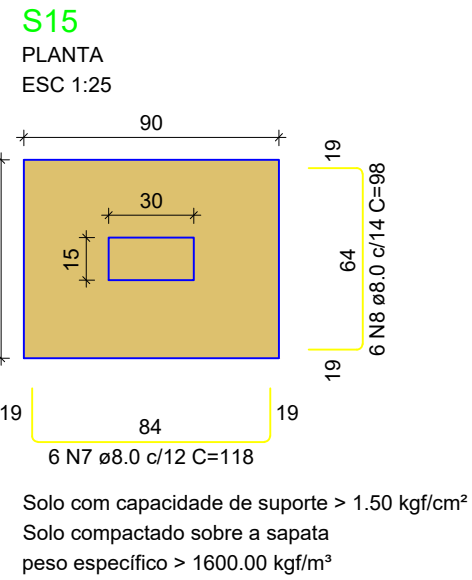
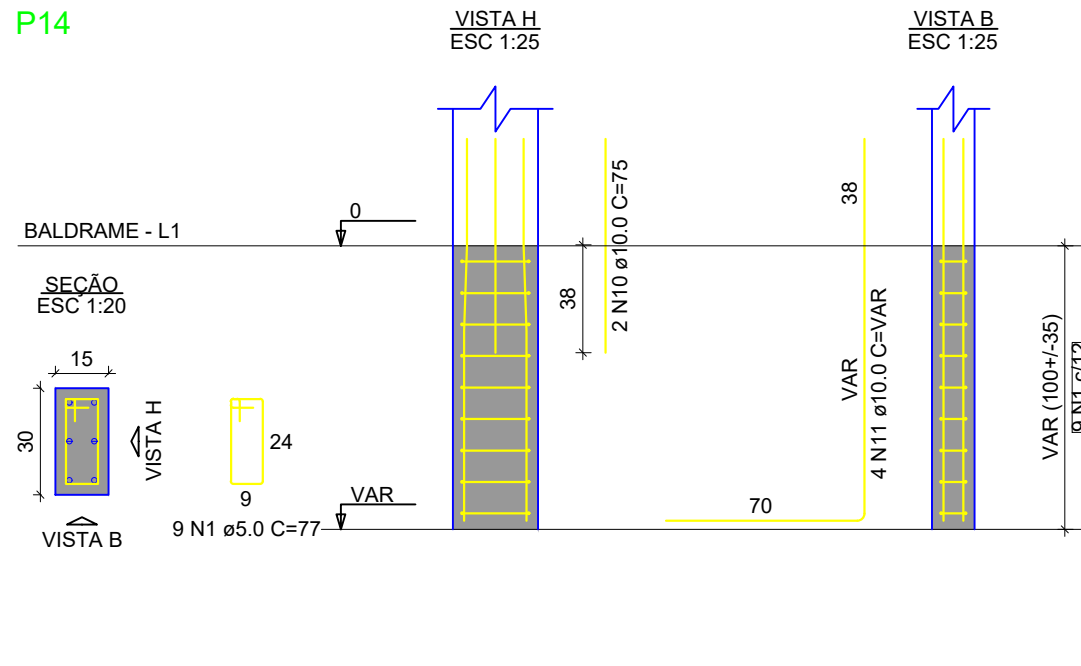
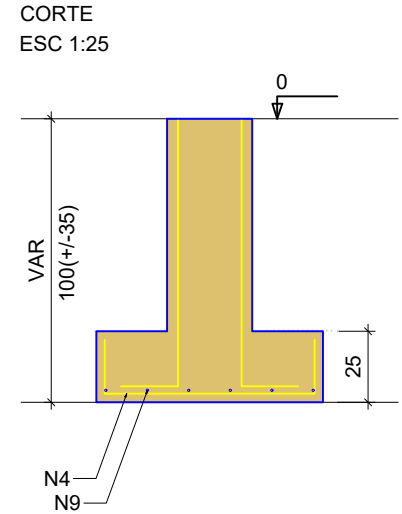
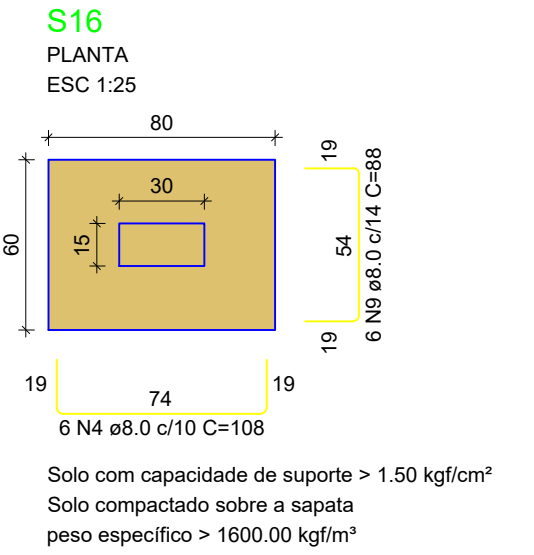
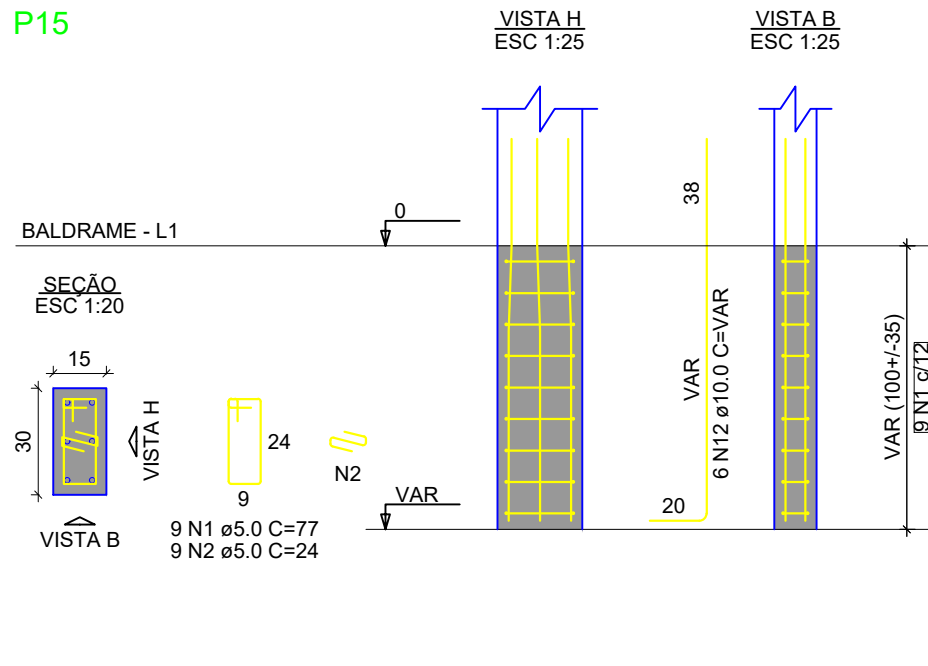


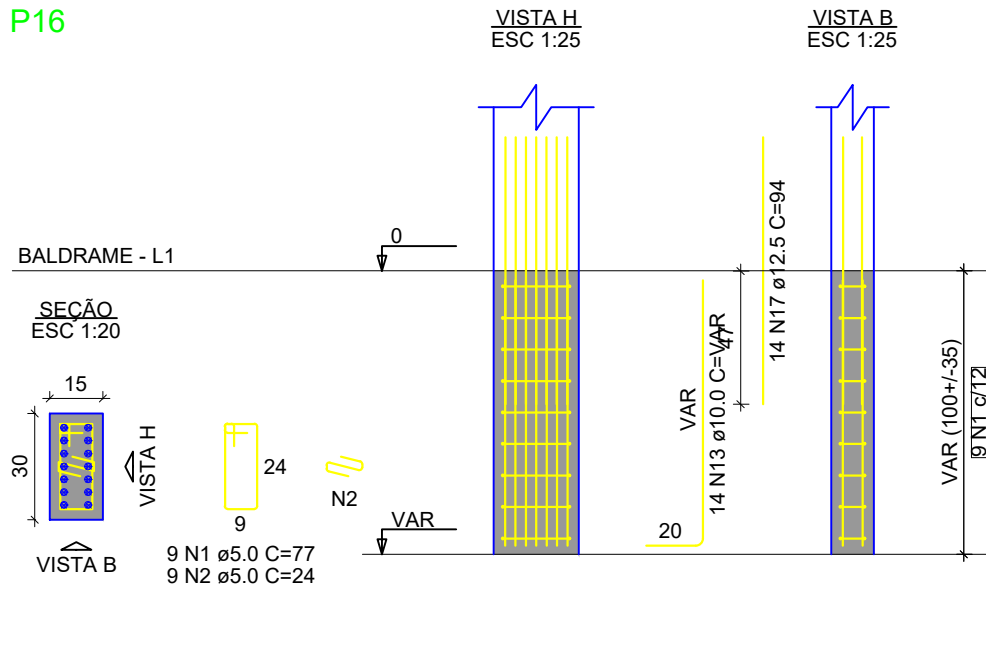
P14



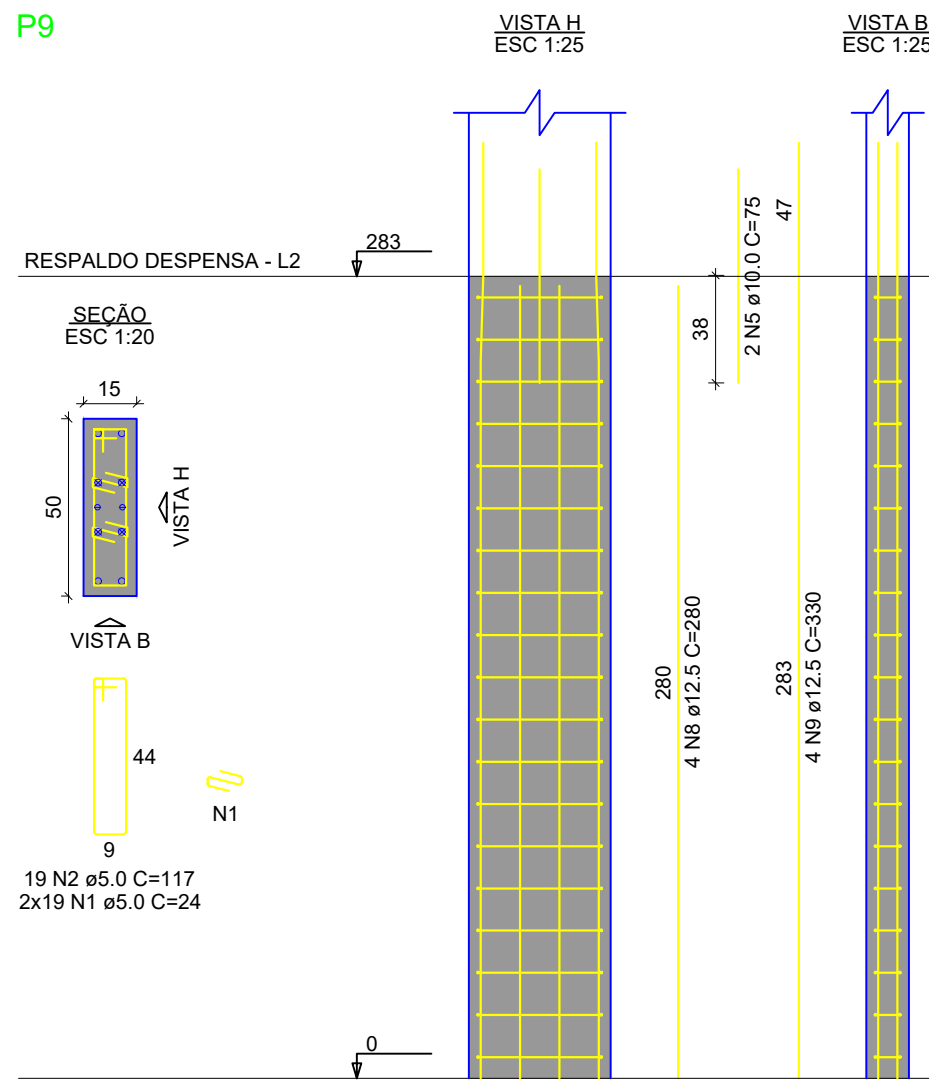
P15



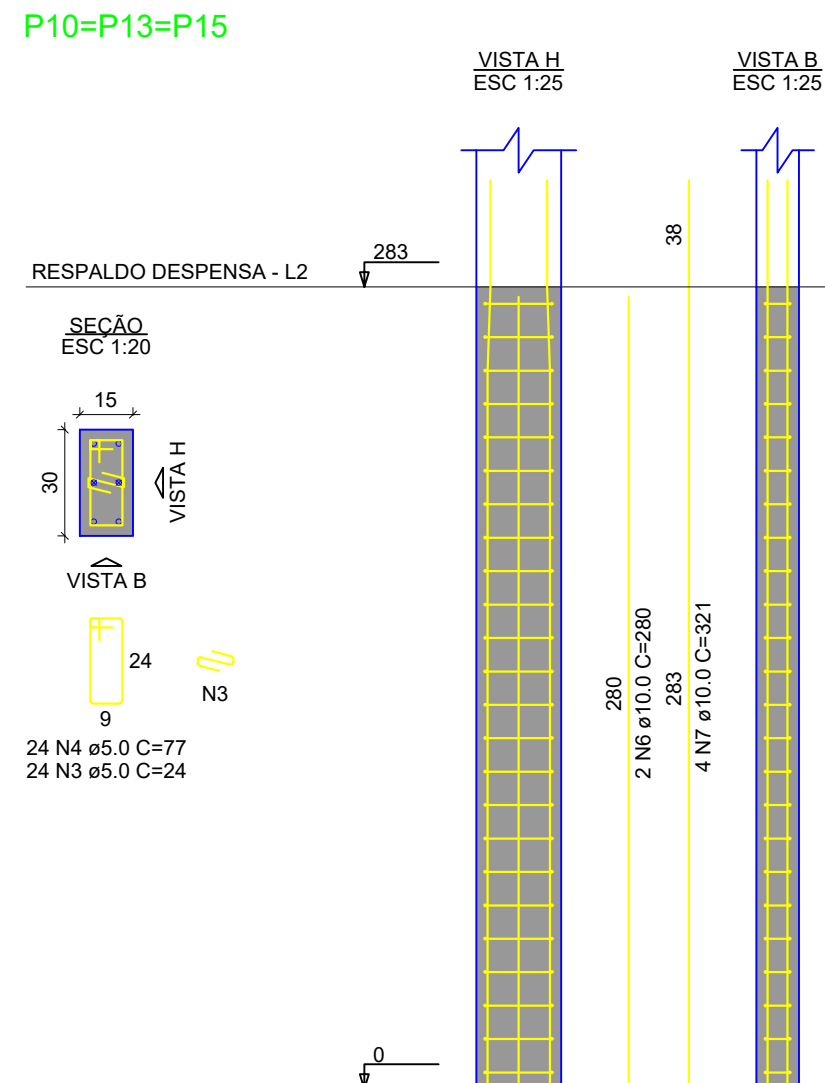
P16



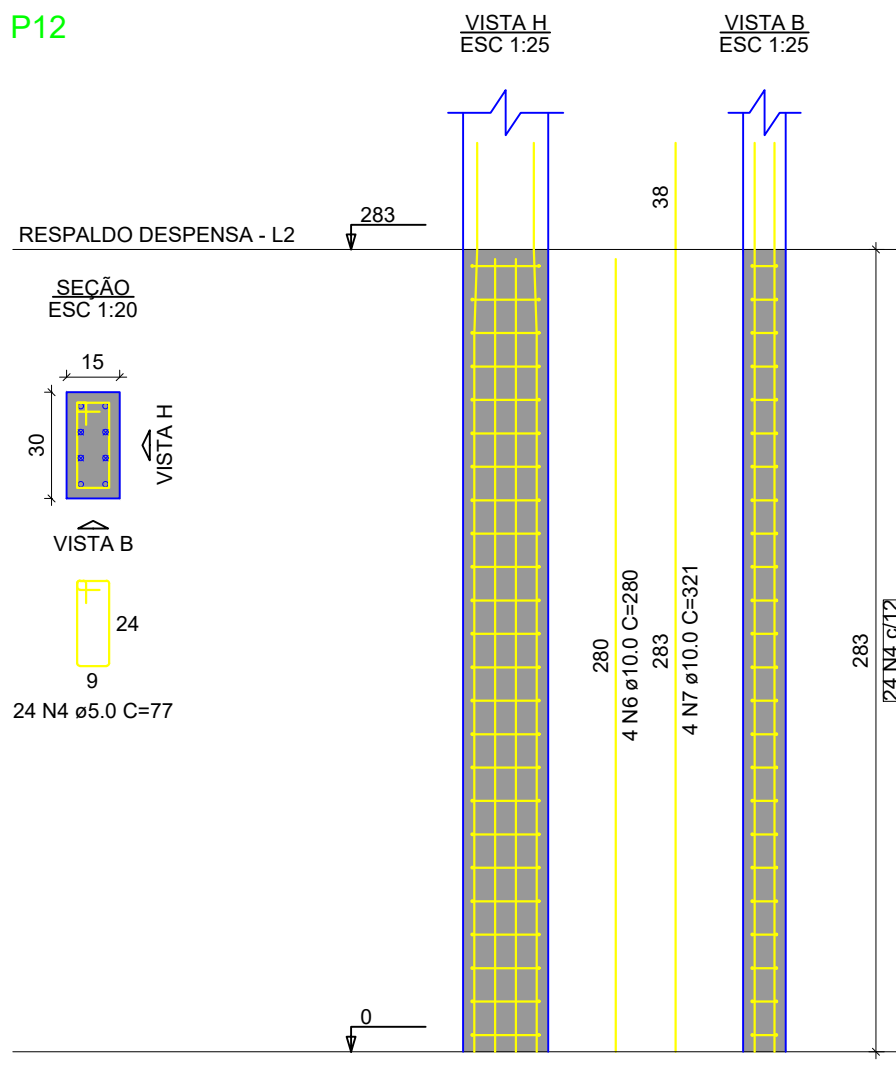
P9



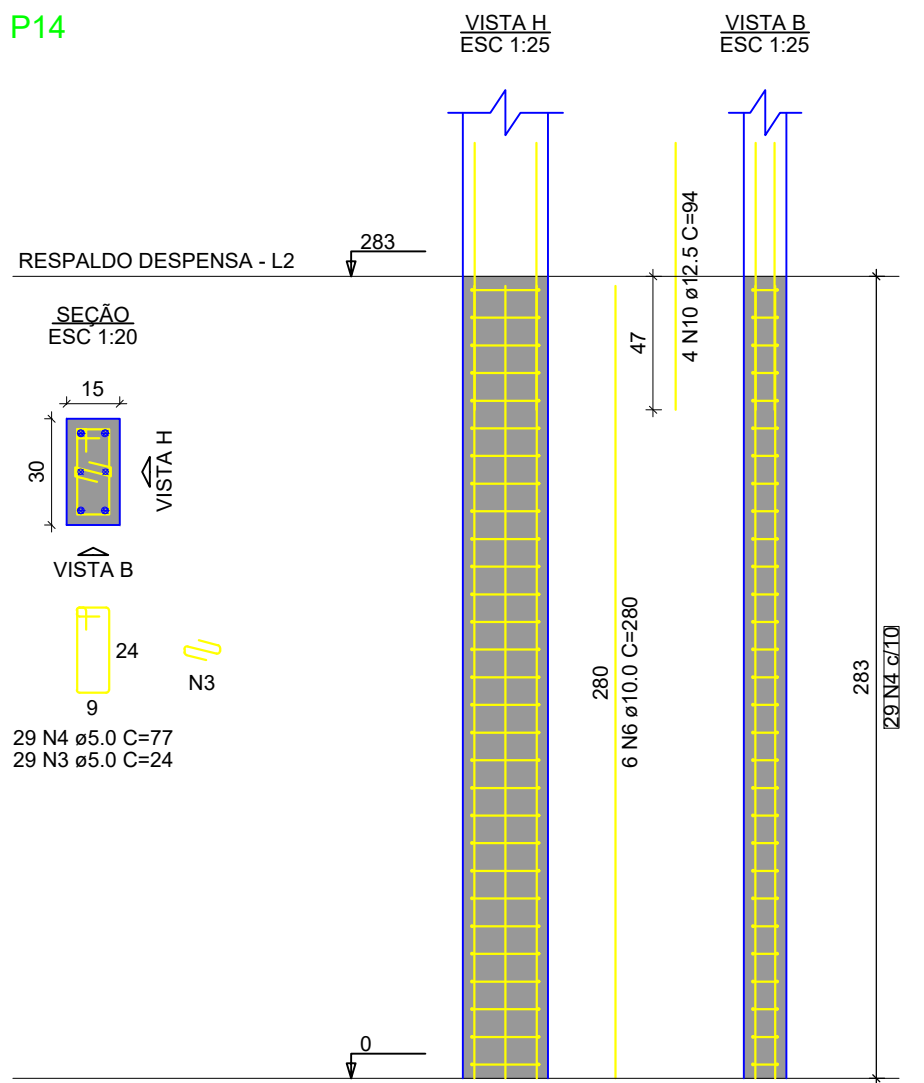
P10=P13=P15



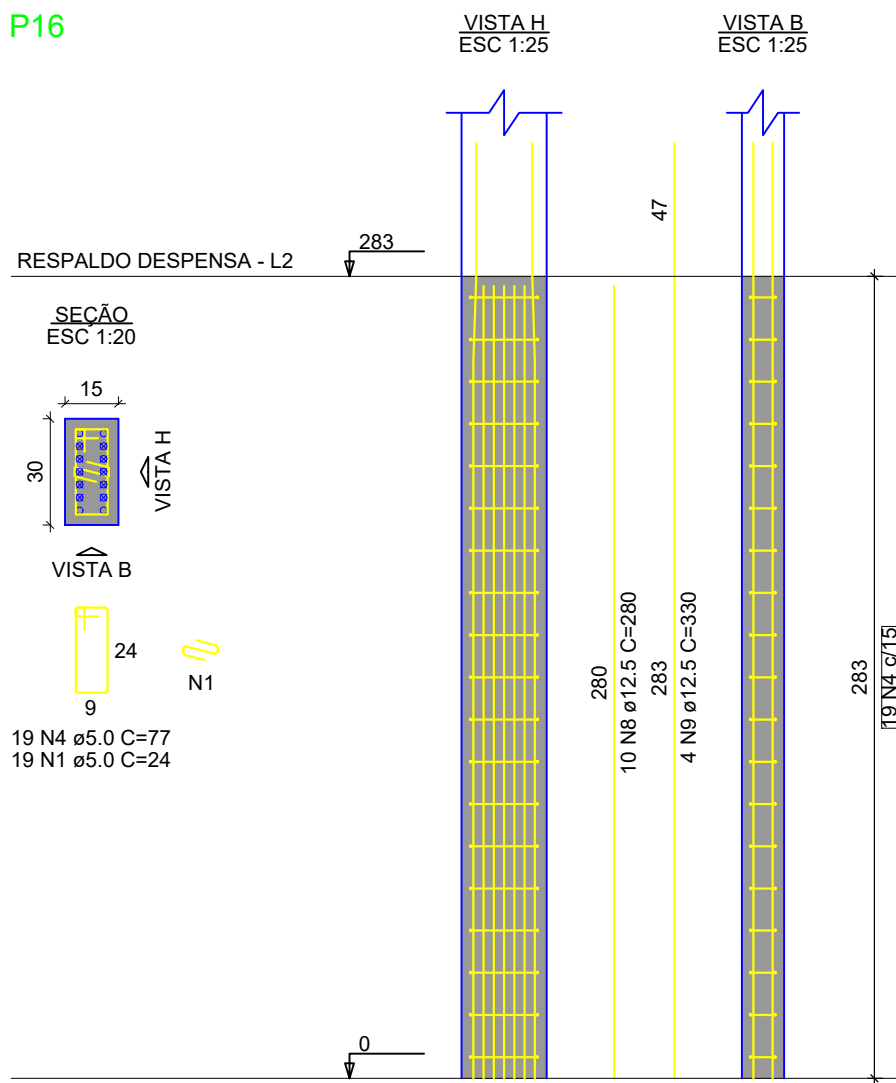
P12



P14



P16



RELAÇÃO DO AÇO

P9		5xP10		P14	
AÇO	N	DIAM (mm)	QUANT	C.UNIT (cm)	C.TOTAL (cm)
CA60	1	5.0	10	24	240
	2	5.0	10	117	1170
CA80	3	5.0	63	77	4851
CA50	4	10.0	26	112	2912
	5	12.5	4	112	448

RESUMO DO AÇO

AÇO	DIAM (mm)	C.TOTAL (m)	PESO + 10% (kg)
CA50	10.0	29.1	19.7
CA80	12.5	4.5	4.7
CA60	5.0	62.6	10.6
PESO TOTAL (kg)			
CA50	24.5		
CA60	10.6		

Volume de concreto (C-25) = 0.40 m³
Área de forma = 7.71 m²

RELAÇÃO DO AÇO

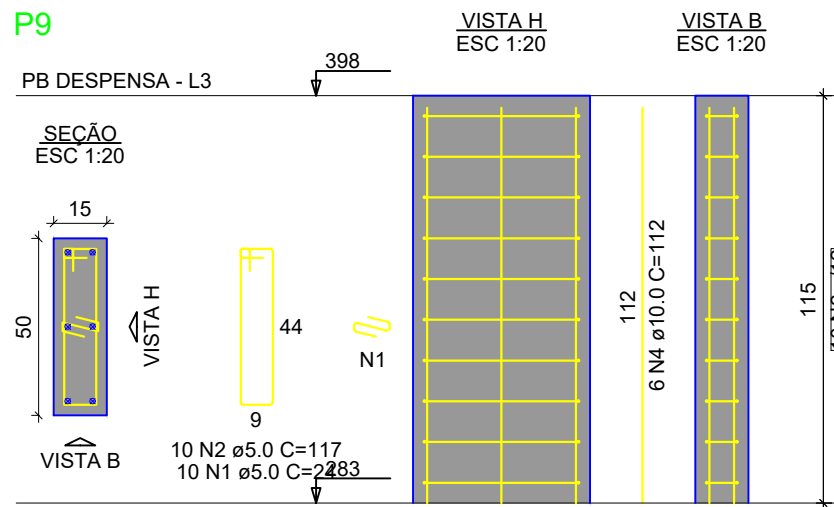
P9		3xP10		P16		P12	
AÇO	N	DIAM (mm)	QUANT	C.UNIT (cm)	C.TOTAL (cm)		
CA60	1	5.0	57	24	1368		
	2	5.0	19	117	2223		
	3	5.0	101	24	2424		
	4	5.0	144	77	11088		
CA50	5	10.0	2	75	150		
	6	10.0	16	280	4480		
	7	10.0	16	321	5136		
	8	12.5	14	280	3920		
	9	12.5	8	330	2640		
	10	12.5	4	94	376		

RESUMO DO AÇO

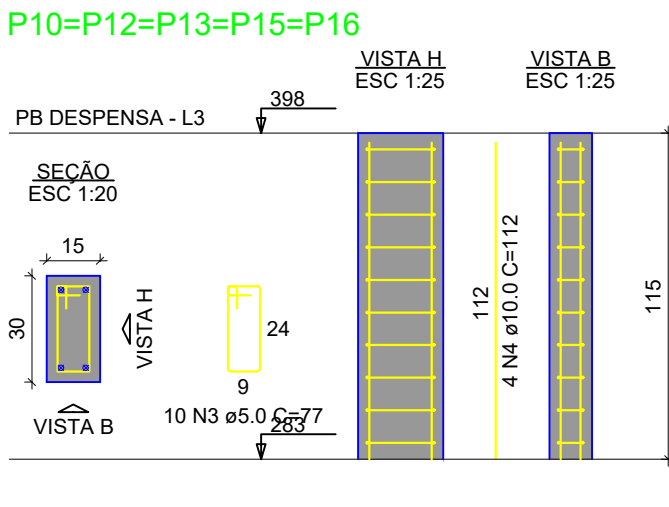
AÇO	DIAM (mm)	C.TOTAL (m)	PESO + 10% (kg)
CA50	10.0	97.7	66.2
CA80	12.5	69.4	73.5
CA60	5.0	171	29
PESO TOTAL (kg)			
CA50	139.7		
CA60	29		

Volume de concreto (C-25) = 0.98 m³
Área de forma = 18.96 m²

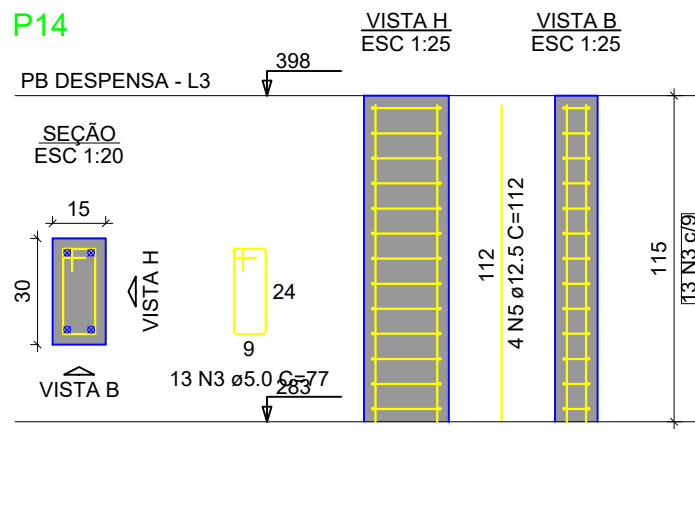
P9



P10=P12=P13=P15=P16



P14



PROJETO ESTRUTURAL

OBRA:	EDIFICAÇÃO RESIDENCIAL	ÁREA EXISTENTE:	0,00 m²	ÁREA A CONSTRUIR:	221,38 m²
LOCAL:	Rua Travessa 4, S/N, Centro, Santa Carmem - MT LOTES S/N - QUADRA S-15	EQUIPE TÉCNICA:	EQUIPE QUE PARTICIPOU DO PROJETO		
PROPRIETÁRIO:				RESP. TÉCNICO - ARQUITETO	PABLO FELIX BETTONI Arquiteta e Urbanista CAU nº: A161000-7
CONTEÚDO:	DETALHE DAS VIGAS BALDRAME 1 A 7			PROJETO	ESTRUTURAL
ESCALA:	INDICADA	DESENHISTA:	PABLO BETTONI	DATA:	JULHO/2025
				FOLHA:	04 / 05
DIREITOS AUTORAIS RESERVADOS. PROIBIDA A REPRODUÇÃO TOTAL OU PARCIAL.					